

PRIME DAILY

September 10, 2025



US Markets Hit Records on Rate Cut Bets, Hopes on India-US Trade Talks Boost Sentiment

U.S. indices reached record closing highs on Tuesday, driven by expectations for Federal Reserve rate cuts following a sharp downward revision to U.S. job data. This labour market weakness reinforced bets for a 25-basis-point cut at next week's Fed meeting.

After directionless early trading, stocks climbed throughout the session, extending Monday's gains to new records. The Labour Department will publish producer price inflation data on Wednesday and consumer price inflation on Thursday. While Friday's weak jobs report boosted confidence in rate cuts, inflation figures could determine the Fed's aggressiveness in lowering rates.

Economists expect August producer price growth to remain unchanged at 3.3% annually. Consumer price inflation is forecast to accelerate to 2.9% from July's 2.7%, while core consumer prices excluding food and energy should hold at 3.1%.

CME Group's FedWatch Tool shows a 91.8% probability of a quarter-point cut and an 8.2% chance of a half-point reduction.

Oracle surged 26% in after-hours trading on AI-driven cloud revenue optimism, offsetting earlier earnings disappointment. Apple fell 1.5% after unveiling new iPhones, as investors questioned whether sustained demand could be maintained amid concerns about global tariffs and market saturation.

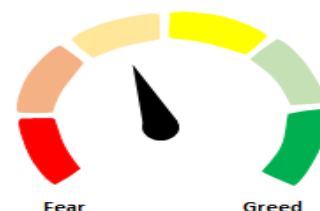
Oil prices rose 1.35% to \$63.10 per barrel for WTI on heightened geopolitical risk following an Israeli airstrike in Qatar and persistent US sanctions on Russia. Energy companies like Chevron and Exxon Mobil led S&P sector gains on renewed supply disruption concerns.

Gold traded near \$3,626 per ounce, up 44% year-over-year, briefly touching record highs as safe-haven demand surged. The rally stems from anticipated rate cuts, central bank purchases, and ongoing geopolitical turbulence.

Nifty continued its upward journey yesterday, rising for the fifth consecutive session and closing at a two-week high. By closing above 24791, Nifty managed to reclaim its level above 50 DEMA. The index has now decisively surpassed its 5, 10, 20, and 50-day DMAs, which is a bullish signal on short-term charts. However, a level above 25000 is likely to bring back the much-awaited momentum in the uptrend. Short-term support for the Nifty has shifted up to 24750.

Prospects of advancing trade negotiations between India and the USA, as indicated by recent interactions between Donald Trump and PM Modi on X/Twitter, will enthuse the bulls.

Indian markets are expected to open higher on the back of promising developments in bilateral trade discussions and strong overnight global cues.



Global Equity Indices			
	Close	Abs. Change	% Change
Indian Indices			
Sensex	81,101	314.0 ▲	0.39%
Nifty	24,869	95.4 ▲	0.39%
Midcap	57,464	103.2 ▲	0.18%
Small cap	17,744	60.0 ▲	0.34%
US Indices			
Dow Jones	45,711	196.4 ▲	0.43%
S&P 500	6,513	17.5 ▲	0.27%
Nasdaq	21,879	80.8 ▲	0.37%
European Indices			
FTSE	9,243	21.1 ▲	0.23%
DAX	23,718	-88.7 ▼	-0.37%
CAC	7,749	14.6 ▲	0.19%
Asian Indices			
Shanghai	3,813	-14.1 ▼	-0.37%
Hang Seng	26,195	561.0 ▲	2.19%
Nikkei	43,684	40.5 ▲	0.09%

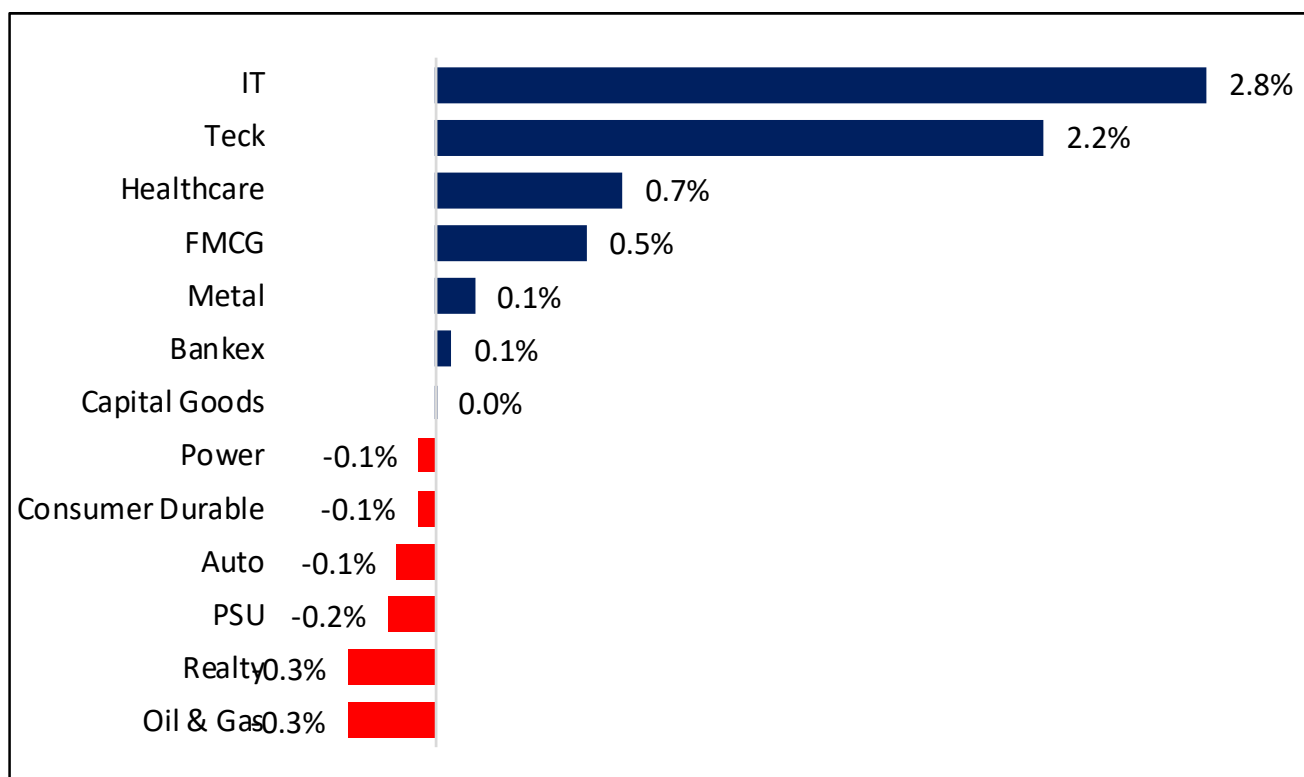
Indices Futures			
	Close	Abs. Change	% Change
IFSC Nifty			
IFSC Nifty	25,021	97.0 ▲	0.39%
US Indices			
Dow Jones	45,703	-54.0 ▼	-0.12%
S&P 500	6,536	14.3 ▲	0.22%
Nasdaq	23,912	38.3 ▲	0.16%
European Indices			
FTSE	9,274	16.0 ▲	0.17%
DAX	23,840	91.0 ▲	0.38%
Asian Indices			
Shanghai	4,431	10.6 ▲	0.24%
Hang Seng	26,210	289.0 ▲	1.11%
Nikkei	43,710	150.0 ▲	0.34%

Nifty50 Index Contributors

Top Five (Positive Contributors)		
Stock	Points	% Change
INFY	56.8	0.23
TCS	6.9	0.03
HCLTECH	5.6	0.02
DRREDDY	5.5	0.02
ADANI PORTS	5.3	0.02

Bottom Five (Negative Contributors)		
Stock	Points	% Change
ETERNAL	-6.1	-0.02
TRENT	-4.8	-0.02
RELIANCE	-3.4	-0.01
HDFCBANK	-2.9	-0.01
NTPC	-2.7	-0.01

BSE Sectoral Leaders & Laggards

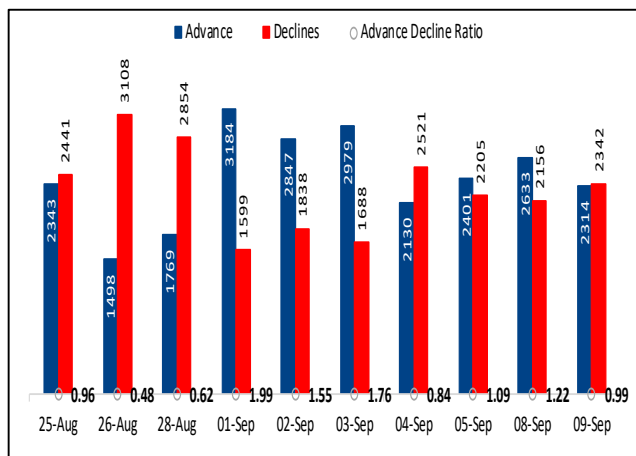


Nifty50 Index Top Pops & Drops

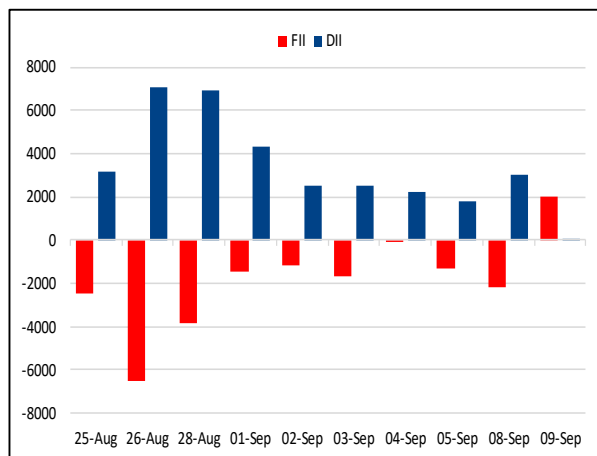
Nifty50 Top Five Gainers			
Symbol	LTP	% Change	Volume
INFY	1504.3	4.98	969,639
DRREDDY	1291.3	3.25	1,643,726
WIPRO	249.15	2.73	12,836,972
TECHM	1498.2	2.57	1,749,566
ADANI PORTS	1380.9	2.42	3,515,252

Nifty50 Top Five Losers			
Symbol	LTP	% Change	Volume
TRENT	5218.5	-1.82	1,014,203
ETERNAL	325.7	-1.2	7,198,254
JIOFIN	307.95	-1.01	10,103,729
NTPC	324.1	-0.8	9,735,495
TITAN	3630.1	-0.76	428,367

BSE Advance & Declines



Institutional Activities



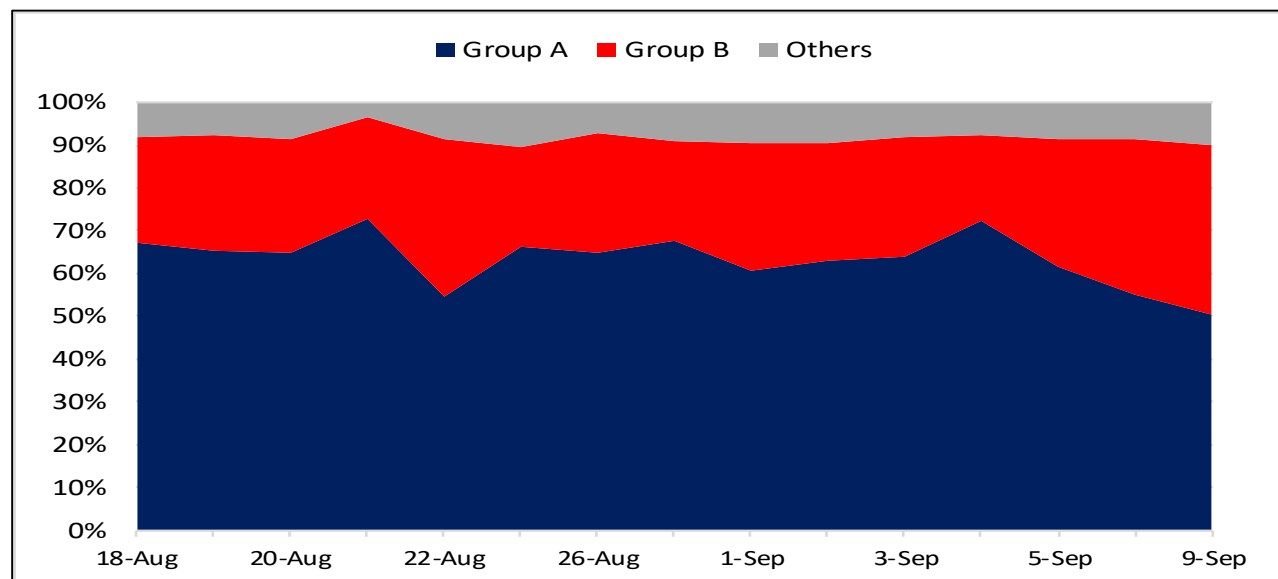
52 Week High Stocks

	9-Sep-25	8-Sep-25
BSE Universe	213	260
BSE Group A Stocks Hitting 52 Week High		
Stocks	Price	52 Week High
MSUMI	49.41	50.5
AFFLE	2070.1	2108.9
ABCAPITAL	289.55	293.25
CARTRADE	2732.9	2754
MARUTI	15361.4	15380




52 Week Low Stocks

	9-Sep-25	8-Sep-25
BSE Universe	68	84
BSE Group A Stocks Hitting 52 Week Low		
Stocks	Price	52 Week Low
REFEX	346.3	334.1
PRAJIND	389.7	388.1
DEEPAKNTR	1739.3	1732.7

BSE Cash Market Turnover Participant-wise



News Highly Sensitive to Stock Price

Impact	Stock	News
	HEG	<p>The company's associate Bhilwara Energy has acquired the remaining 49% minority stake from Statkraft in Malana Power Company Ltd, making it the sole owner. The transaction includes Statkraft's stake in the Malana Hydropower Plant (86 MW) and Allain Duhangan Hydropower Plant (192 MW), both located in Himachal Pradesh. These plants have been operated as 51:49 joint venture since 2004.</p> <p>Bhilwara Energy (BEL) has approved a preferential allotment of 1.7 crore shares at Rs 142.08 per share to Singularity Growth Opportunities Fund II and other investors. Post the above allotment, the Investors holdings will increase from 9.6% to 17.51% of BEL.</p>
	Vikram Solar	<p>The company reported a revenue of Rs 1,133.6 Cr, recording a growth of 79.7% YoY (-4% degrowth QoQ). EBITDA surged 117.3% YoY (16.9% QoQ) to Rs. 242.2 Cr while margin rose by 370bps. PAT margin significantly improved to 11.7% in Q1FY26 from 3.6% in Q1FY25, registering a 484% growth in earnings. EPS boosted from 0.75 per share to 4.21 per share in Q1FY26. Current order book for the company stands at 10.96 GW.</p>
	Blue Jet Healthcare	<p>The promoter Akshay B. Arora to sell 3.42% stake via OFS on Sept. 10 & 11. Promoter may also sell additional 3.42% stake via oversubscription option. The floor price has been fixed at Rs 675 per share.</p>

Stock	News
TCS	Tata Consultancy Services (TCS) has signed a partnership with CEA, among the world's most innovative research institutions to accelerate innovation and industrialization of Physical AI solutions. Physical AI is focused on bringing together robotics, artificial intelligence, and intelligent systems to help machines perceive, interpret, and interact with the physical world, thus advancing digital transformation and modernization of industrial processes. .
Infosys	Infosys Finacle, part of EdgeVerve Systems, a wholly-owned subsidiary of Infosys and PT Bank CTBC Indonesia (Bank CTBC Indonesia), subsidiary of the CTBC Group, Taiwan, announced the successful deployment of Finacle Digital Banking Solution Suite on a cloud hosted model, as part of the bank's digital transformation initiatives.
Vodafone Idea	Vodafone Idea has moved the Supreme Court seeking to quash an additional Rs 9,450 crore AGR demand by the Department of Telecommunications (DoT), arguing that the fresh dues exceed the scope of the Court's earlier ruling on AGR liabilities.
Knowledge Marine	Knowledge Marine & Engineering Works has received a work order from Deendayal Port Authority for Dredging in Approach Channel, Turning Circle, Berth Pockets surrounding of Landing Pontoon, etc. at Ghogha Ro-Ro Terminal -Gujarat. The work order shall be executed over a period of 12 months and is valued at Rs 47.59 crore.
Samvardhana Motherson	Samvardhana Motherson has completed the acquisition of the remaining 25% stake in two Turkish subsidiaries — SMR Plast Met Molds And Tools Turkey Kalip Imalat Anonim Şirketi and SMR Plast Met Automotive Tec Turkey Plastik Imalat Anonim Şirketi.
Thermax	Thermax has infused Rs 115 crore in its wholly-owned subsidiary, First Energy Private Limited (FEPL), to support further investment in its step-down wholly owned subsidiary, First Energy 10 Private Limited (FE10). The allotment of equity shares in both FEPL and FE10 was completed on the same day.
Sun Pharmaceutical Industries	<p>US FDA conducted an inspection at the Company's Halol Facility from 2 June to 13 June 2025, the FDA has now classified the facility as Official Action Indicated (OAI).</p> <p>This means the FDA considers the facility to be not fully compliant with regard to certain current good manufacturing practices (CGMP).</p> <p>The Halol facility is under Import Alert, resulting in the refusal of shipments from the facility into the US, barring certain exemptions due to drug shortage, until the facility becomes fully compliant with FDA and cGMP standards.</p>

Stock	News
Sri Lotus Developers	Sri Lotus Developers announced that it has been appointed as the developer for a prestigious redevelopment project in Bandra West, Mumbai. The project is located in the heart of the city, near the iconic Bandstand Promenade.
Kotak Mahindra Bank	Japan's Sumitomo Mitsui Banking Corp (SMBC) is set to sell a 1.65% stake in Kotak Mahindra Bank through a block deal worth Rs 6,166 crore. The shares are being offered at a floor price of Rs 1,880 apiece
LTIMindtree	LTI Mindtree has extended its long-standing partnership with OKQ8, one of the Nordic region's largest fuel companies, through a renewed multi-million-dollar technology contract.
Waaree Renewables	Waaree Renewables has received a Letter of Award (LoA) worth Rs 1,252 crore from Waaree Forever Energies for a solar power project. The project involves turnkey EPC execution of an 870 MWac / 1,218 MWp grid-connected ground-mount solar power plant, which will include a 33kV/400kV substation, transmission line, and two years of operation and maintenance (O&M) services.
NBCC	NBCC has signed a memorandum of understanding with the Nagpur Metropolitan Region Development Authority (NMRDA) to develop the planned business district of Naveen Nagpur. The project, spread across about 1,710 acres, will include a 1,000-acre business district and 710 acres reserved for future expansion.
Sterling & Wilson Solar	The company has received a LOI from a leading Private IPP for a BOS EPC package for development of a 300 MW AC / 420 MWp DC Solar PV Project along with 220/33 kV Pooling Substation in Rajasthan, India. Total value of the contract is approximately Rs 415 crore including O&M and taxes.
Mamata Machinery	The company has received a second export order for a 9-layer blown film plant in its Co-Extrusion product segment. The order is valued at approximately US\$ 1.17 million.
ICICI Prudential Life	ICICI Prudential Life's board will meet on Sept 12 to consider redeeming Rs 1200 crore worth of unsecured subordinated non-convertible debentures (NCDs) allotted in November 2020. The company will also consider raising funds in one or more tranches via issuance of subordinated NCDs on a private placement basis.

Key Events

U.S. Small Business Optimism Improves In August: NFIB

Small business confidence in the U.S. improved in August, largely led by stronger sales expectations and easing uncertainty, results of a monthly survey by the National Federation of Independent Business showed on Tuesday. The NFIB Small Business Optimism Index rose 0.5 points to 100.8 in August. Economists were looking for a higher score of 101. The latest reading is about 3 points above the 52-year average of 98.

UK Retail Sales Growth Accelerates: BRC

UK retail sales growth accelerated in August thanks to the sunny weather and the interest rate reduction, data from the British Retail Consortium showed Tuesday. Retail sales increased 3.1 percent on a yearly basis in August, following a growth of 1.0 percent in the previous year. Food sales advanced 4.7 percent after a growth of 3.9 percent last year. At the same time, non-food sales grew 1.8 percent, reversing last year's 1.4 percent decline.

Vietnam exports to U.S., imports from China fall in August after tariffs take effect

Vietnam's exports to the United States fell 2% in August from July to \$13.94 billion, Vietnamese customs data showed on Tuesday, as a tariff of 20% on shipments to the United States took effect. Imports from China also fell 2% in August from July, the Customs Department said. The Trump administration has repeatedly accused Vietnam of being used as a transshipment hub for Chinese goods directed to the United States.

Nifty : Reclaimed A Level Above 50 DEMA; Breakout Above 25000; Support At 24700



Nifty IT Index: Bullish Double Bottom Formation Near 34250; Expect Pullback Extension

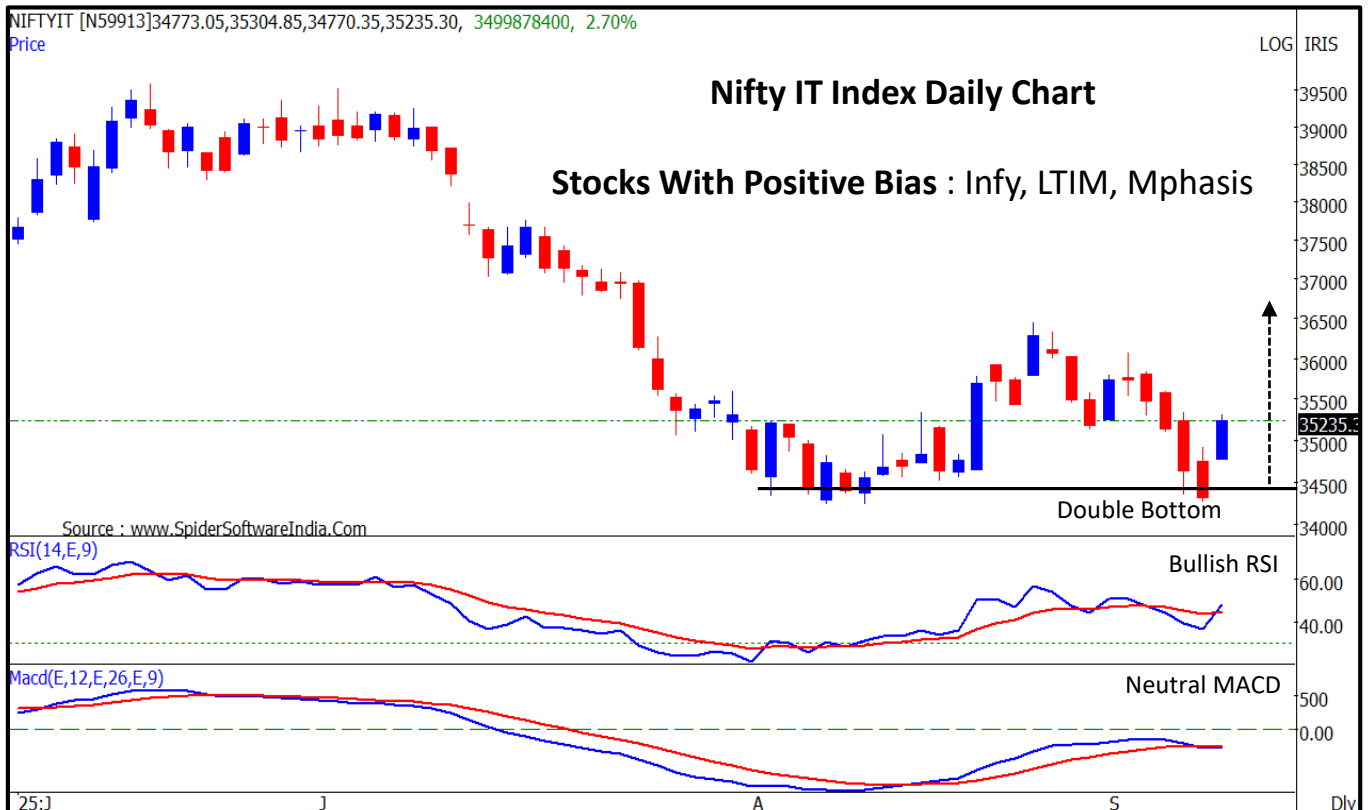
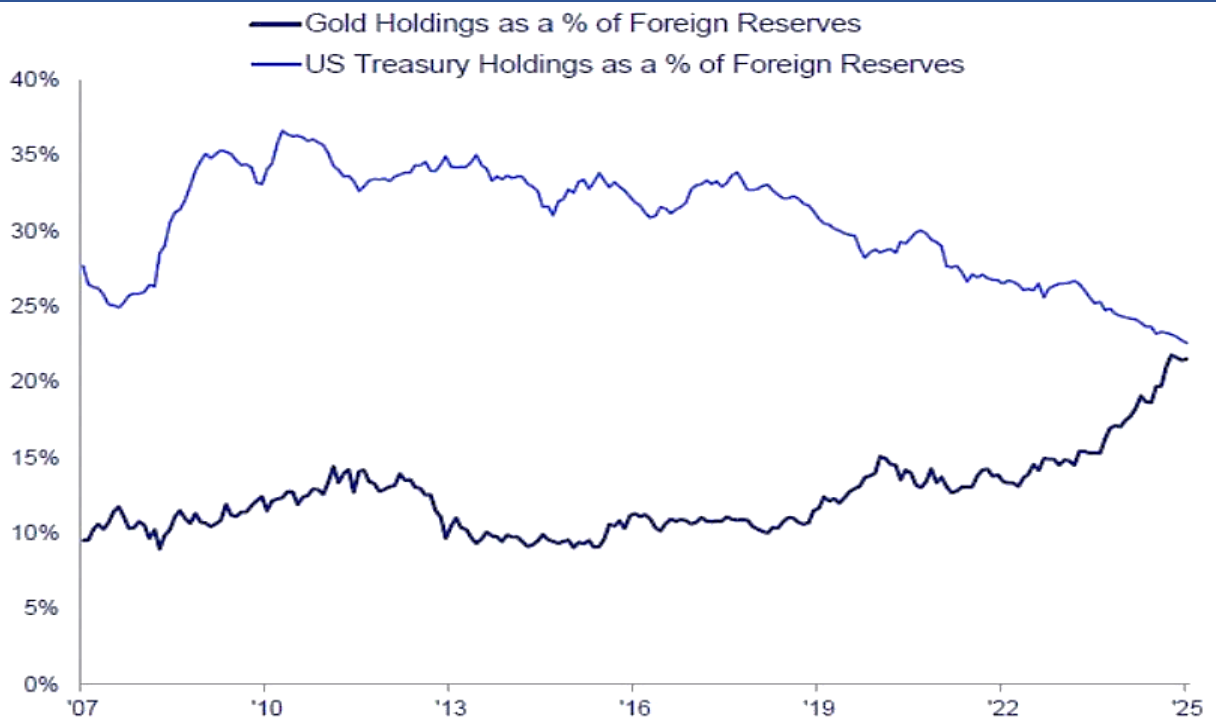


Chart With Interesting Observation

Gold To Outweighs U.S. Treasuries in Global Reserves

- According to recent data, gold now comprises a larger share of global central bank reserves than U.S. Treasuries, marking a major shift in the composition of sovereign wealth holdings. This is significant. For decades, Treasuries were considered the safest and most liquid asset for reserve managers worldwide. The fact that gold is now overtaking them speaks volumes about changing risk perceptions — not just about return on capital, but return of capital.
- Gold is no longer just a “barbarous relic.” It's back in the conversation as a core asset class, a portfolio hedge, and a geopolitical reserve tool — and in today's macro environment, that makes it a uniquely potent force.

Foreign Reserves Gold vs US Treasury



Source: State Street Markets, Bloomberg

F&O Highlights

LONG BUILD UP WAS SEEN IN THE NIFTY & BANK NIFTY FUTURES

Create longs with the SL of 24850 levels.

- Nifty continued its impressive upward journey today, rising for the fifth consecutive session and closing at a two-week high. After a gap-up opening of 91 points on the back of strong global cues, Nifty remained in the narrow range throughout the weekly expiry day. Nifty finally ended the day with a gain of 95 points or 0.39%, to close at 24868.
- Long Build-Up was seen in the Nifty Futures where Open Interest rose by 0.04% with Nifty rising by 0.39%.
- Long Build-Up was seen in the Bank Nifty Futures where Open Interest rose by 1.43% with Bank Nifty rising by 0.05%.
- Nifty Open Interest Put Call ratio fell to 1.08 levels from 1.11 levels.
- Amongst the Nifty options (16-Sep Expiry), Call writing is seen at 25000-25100 levels, indicating Nifty is likely to find strong resistance in the vicinity of 25000-25100 levels. On the lower side, an immediate support is placed in the vicinity of 24800-24900 levels where we have seen Put writing.
- Long build-up was seen by FII's in the Index Futures segment where they net bought worth 280 cr with their Open Interest going up by 2140 contracts.

Index	Expected Trend	Prev. Close	Buy/Sell	Stop Loss	Target
NIFTY FUT	UP	24950.30	BUY	24850	25100
BANK NIFTY FUT	UP	54468.40	BUY	54300	54800

Nifty50 Snapshot			
	09-Sept-25	08-Sept-25	% Chg.
Nifty Spot	24868.60	24773.15	0.39
Nifty Futures	24950.30	24892.70	0.23
Premium/ (Discount)	81.70	119.55	N.A.
Open Interest (OI)	1.85	1.85	0.04
Nifty PCR	1.08	1.11	-2.71

Bank Nifty Snapshot			
	09-Sept-25	08-Sept-25	% Chg.
Bank Nifty Spot	54216.10	54186.90	0.05
Bank Nifty Futures	54468.40	54499.80	-0.06
Premium/ (Discount)	252.30	312.90	N.A.
Open Interest (OI)	0.31	0.30	1.43
Bank Nifty PCR	0.94	0.95	-0.88

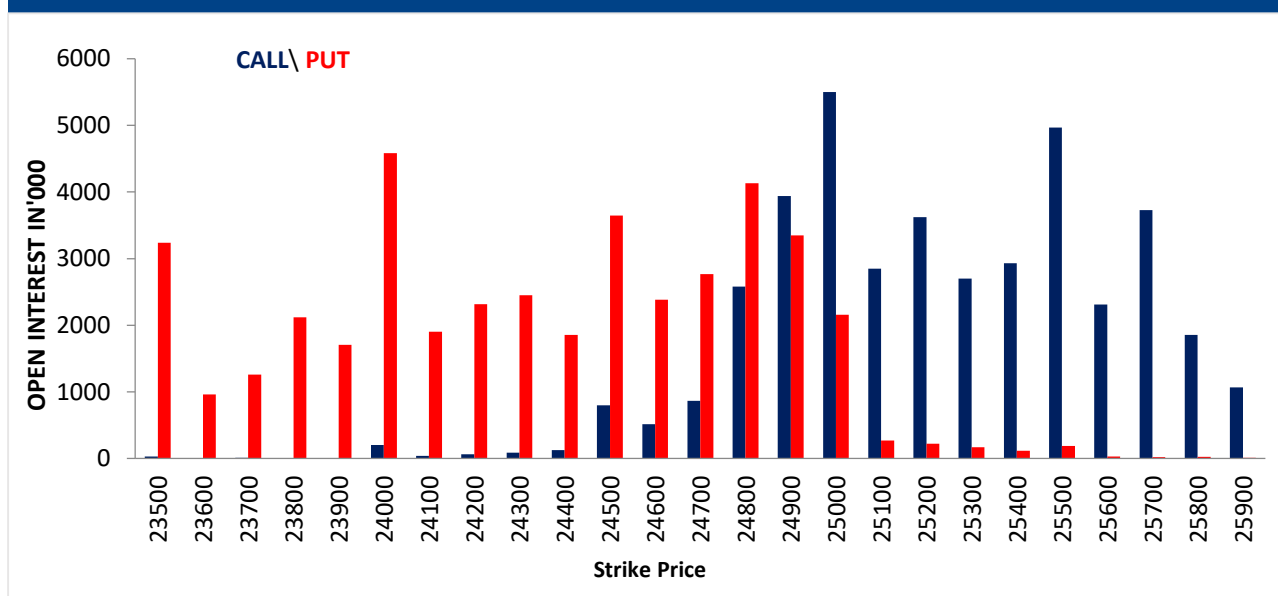
Nifty Options Highest OI (Weekly)			
CALL		PUT	
Strike Price	Open Interest (Contracts)	Strike Price	Open Interest (Contracts)
25000	73340	24000	61105

FII Activity On 09 Sept 2025

	BUY		SELL		NET	OPEN INTEREST	
	Contracts	Value (Rs Cr)	Contracts	Value (Rs Cr)	(Rs Cr)	Contracts	Value (Rs Cr)
Index Futures	8300	1554	6790	1274	280	229886	42990
Nifty Futures	6524	1221	4738	887	334	166451	31157
Bank Nifty Fut.	1294	247	1697	323	-77	37294	7115
Index Options	12025798	2241315	12051836	2246814	-5499	1235358	230898
Nifty Options	11915055	2220475	11937618	2225358	-4883	986190	183939
Bank Nifty Opt.	82907	15837	84891	16202	-365	221513	42034
Stock Futures	190195	12876	190454	13127	-251	5462235	381611
Stock Options	240564	17025	239085	16869	156	346130	23992

FII's Open Interest (Contracts)

Date	Index Futures	Nifty Futures	Bank Nifty Futures	Index Options	Nifty Options	Bank Nifty Options	Stock Futures	Stock Options
09-Sept-25	229886	166451	37294	1235358	986190	221513	5462235	346130
08-Sept-25	227746	164437	36935	2226341	1976988	222451	5463032	337621
Net Contracts	2140	2014	359	-990983	-990798	-938	-797	8509

Nifty Weekly (16 – Sept) Option Open Interest Distribution


Top Gainers OI Wise		
Company	Future OI (%)	Price (%)
UPL	9	0
ASTRAL	9	0
NUVAMA	7	-1
TORNTPOWER	7	-1
HUDCO	6	-1

Top Losers OI Wise		
Company	Future OI (%)	Price (%)
INFY	-6	5
ADANIPORTS	-5	2
AMBER	-4	5
SBICARD	-3	2
ANGELONE	-3	0

Top Gainers Price Wise		
Company	Future OI (%)	Price (%)
INFY	-6	5
TITAGARH	5	5
AMBER	-4	5
DRREDDY	4	3
GLENMARK	0	3

Top Losers Price Wise		
Company	Future OI (%)	Price (%)
PAYTM	5	-3
NYKAA	1	-2
DELHIVERY	2	-2
UNOMINDA	2	-2
SONACOMS	0	-2

Long Buildup		
Company	Future OI (%)	Price (%)
TIINDIA	5	3
TITAGARH	5	5
TATAELXSI	5	2
RVNL	5	0
GODREJCP	5	1

Short Buildup		
Company	Future OI (%)	Price (%)
UPL	9	0
NUVAMA	7	-1
TORNTPOWER	7	-1
HUDCO	6	-1
TRENT	6	-2

Long Unwinding		
Company	Future OI (%)	Price (%)
ANGELONE	-3	0
TITAN	-1	-1
JINDALSTEL	-1	-1
M&M	-1	0
HINDPETRO	-1	-1

Short Covering		
Company	Future OI (%)	Price (%)
INFY	-6	5
ADANIPORTS	-5	2
AMBER	-4	5
SBICARD	-3	2
TECHM	-3	3

Securities In Ban For Trade – 10.09.2025

No.	Company Name
1.	RBLBANK

Economic Calendar

Wednesday	Thursday	Friday	Monday	Tuesday
10 Sept	11 Sept	12 Sept	15 Sept	16 Sept
China: CPI US: MBA Mortgage, Wholesale Invt.	ECB Monetary Policy US: CPI, Initial & Conti. Claims, Fed. Budget Balance	Japan: IIP UK: IIP, Mfg. Production, Trade Balance, India: CPI US: Uni. of Mich. sentiment	Japan: Holiday China: New Home & Retail Sales, IIP India: WPI, Trade Balance EU: Trade Balance US: Empire Mfg.	UK: Claimant count EU: IIP US: IIP, Mfg.(SIC), Capacity Utilisation, NAHB Housing Mkt Index

Open Derivatives Trading Calls

NO	RECO DT	RECO	COMPANY NAME	BUY RANGE	CMP	SL	TARGET	UPSIDE %	VALID TILL
1	8-SEP-25	BUY	BANK NIFTY SEP FUT	54605.80-54370	54,479	54250	55100	1.1	11-SEP-25
2	8-SEP-25	SELL	NIFTY SEP FUT	24900.1-24950	24,961.00	24990	24780	0.7	22-SEP-25
3	4-SEP-25	SELL	NHPC SEPT FUT	78.60-79.60	79	80.6	74.65	5.5	18-SEP-25

Open Short-Term MTF Calls

NO.	RECO DT.	RECO	COMPANY NAME	BUY RANGE	CMP	Lower Band	SL	TARGET	UPSIDE %	VALID TILL
1	1-SEP-25	BUY	PETRONET	276-274	273.1	266	260.5	293	7.3	15-SEP-25
2	2-SEP-25	BUY	BEML	4027-4050	4,046.2	3900	3840	4280	5.8	16-SEP-25
3	5-SEP-25	BUY	SANSERA ENG	1364-1378	1,393.8	1,320.0	1300	1471	5.5	19-SEP-25
4	5-SEP-25	BUY	AMRUTANJAN	753-761	759.6	728.0	715	807	6.2	19-SEP-25
5	8-SEP-25	BUY	IRFC	125-124.08	124.8	120.5	118.0	132	5.8	29-SEP-25
6	8-SEP-25	BUY	HAVELLS INDIA	1592-1601	1,587.1	1,575.0	1,560.0	1657	4.4	29-SEP-25
7	8-SEP-25	BUY	SAMVARDHANA MOTHERSON	98.80-99.20	98.8	95.5	94.0	104.5	5.7	29-SEP-25
8	9-SEP-25	BUY	ORIENT HOTEL	146.50-145.24	144.9	141.0	138.0	155.0	6.9	23-SEP-25
9	9-SEP-25	BUY	METRO BRAND	1241-1254	1,243.1	1,214.0	1,191.0	1,315.0	5.8	23-SEP-25

Open Positional MTF Calls

NO.	RECO DT.	RECO	COMPANY NAME	BUY RANGE	CMP	SL	TARGET 1	TARGET 2	UPSIDE %	VALID TILL
1	2-JUN-25	BUY	INDIAN BANK*	617.05-595.75	670.0	617.1	663.8	688.8	3	12-SEP-25
2	18-AUG-25	BUY	INFRA BEES	942-937.80	927.4	900.0	985.0	1015	9	17-OCT-25
3	19-AUG-25	BUY	SUPREME INDS	4496-4586	4,378.5	4190.0	4860.0	4960	13	3-OCT-25
4	20-AUG-25	BUY	CHAMBAL FERTILIZERS	560-571	537.9	515.0	615.0	640	19	19-OCT-25
5	2-SEP-25	BUY	TEGA INDUSTRIES	1980-1967	2,094.1	1815.0	2165.0	2300	10	1-NOV-25
6	4-SEP-25	BUY	FLAIR WRITING	322-332	331.5	298.0	354.0	369	11	3-NOV-25
7	4-SEP-25	BUY	DABUR INDIA	543-562	544.3	509.0	587.0	615	13	3-NOV-25
8	4-SEP-25	BUY	TANLA PLATFORMS	658-648.70	675.8	599.0	715.0	765	13	3-NOV-25

*= 1st Target Achieved

NSE 200 SUPPORT & RESISTANCE

SYMBOL	CLOSE	R2	R1	PIVOT	S1	S2	5 DMA	20 DMA	% Delivery	Trend
ABB	5131.9	5183.3	5157.6	5124.3	5098.6	5065.3	5141.8	5088.7	65.9	Bullish
ABCAPITAL	289.7	296.7	293.2	289.9	286.4	283.0	283.3	280.3	40.4	Bullish
ABFRL	91.1	94.0	92.5	91.0	89.6	88.0	86.0	80.1	23.6	Bullish
ACC	1850.2	1862.1	1856.2	1849.0	1843.1	1835.9	1840.2	1821.5	65.5	Bullish
AMBUJACEM	567.6	579.5	573.6	570.0	564.1	560.5	569.2	576.7	66.8	Bearish
ADANIPOWER	643.7	654.7	649.2	642.5	637.0	630.4	621.0	603.2	32.5	Bullish
ADANIENSOL	794.2	810.1	802.1	787.8	779.9	765.6	769.7	786.7	57.3	Bearish
ADANIGREEN	943.7	954.0	948.9	942.3	937.2	930.6	935.0	939.3	31.9	Bearish
ADANIENT	2311.6	2339.2	2325.4	2311.2	2297.4	2283.2	2294.3	2303.5	28.2	Bearish
ADANIPORTS	1380.9	1408.1	1394.5	1371.4	1357.8	1334.7	1342.3	1336.4	55.5	Bullish
ASHOKLEY	135.1	138.7	136.9	135.9	134.0	133.0	132.3	129.0	52.7	Bullish
ALKEM	5336.0	5391.3	5363.7	5342.3	5314.7	5293.3	5319.2	5318.4	71.3	Bullish
APLAPOLLO	1694.9	1716.2	1705.5	1689.4	1678.7	1662.6	1679.7	1634.8	44.2	Bullish
APOLLOHOSP	7825.5	7902.5	7864.0	7809.5	7771.0	7716.5	7810.5	7744.6	73.5	Bullish
ASIANPAINT	2537.3	2564.7	2551.0	2537.9	2524.2	2511.1	2554.1	2533.3	67.3	Bullish
APOLLOTYRE	481.4	489.0	485.2	481.2	477.4	473.5	483.1	465.2	49.2	Bullish
AUROPHARMA	1043.9	1057.3	1050.6	1043.3	1036.6	1029.3	1039.8	1050.2	58.3	Bearish
ASTRAL	1462.0	1494.5	1478.2	1457.8	1441.5	1421.1	1445.2	1386.0	64.7	Bullish
ATGL	594.6	601.1	597.9	595.0	591.7	588.8	594.1	607.7	39.4	Bearish
AUBANK	697.5	702.3	699.9	697.4	695.0	692.5	700.3	729.7	67.6	Bearish
AXISBANK	1052.2	1063.6	1057.9	1053.3	1047.6	1043.0	1053.7	1063.8	67.4	Bearish
BAJFINANCE	948.4	955.3	951.9	945.9	942.5	936.5	932.3	895.5	56.7	Bullish
BAJAJHFL	111.8	113.3	112.6	112.1	111.4	110.9	112.3	112.6	61.6	Bearish
BANDHANBNK	163.5	165.9	164.7	163.9	162.6	161.8	163.7	166.6	45.2	Bearish
BDL	1423.9	1464.2	1444.0	1432.5	1412.3	1400.8	1441.0	1494.4	43.4	Bearish
BHARTIARTL	1893.7	1914.6	1904.1	1893.6	1883.1	1872.6	1888.2	1893.8	56.5	Bearish
BHARTIHEXA	1770.0	1810.3	1790.2	1761.8	1741.7	1713.3	1764.7	1773.1	46.9	Bearish
BEL	372.0	376.1	374.0	372.0	369.9	367.9	373.2	375.4	49.7	Bearish
BHEL	214.5	218.1	216.3	215.2	213.4	212.3	214.3	216.4	34.3	Bearish
BHARATFORG	1181.7	1223.0	1202.4	1186.2	1165.6	1149.4	1157.6	1151.6	38.9	Bullish
BIOCON	364.5	369.4	366.9	364.1	361.7	358.9	362.2	358.0	42.8	Bullish
BAJAJ-AUTO	9383.0	9541.3	9462.2	9349.3	9270.2	9157.3	9217.6	8767.9	54.6	Bullish
BAJAJFINSV	2025.3	2052.4	2038.9	2025.4	2011.9	1998.4	2003.3	1958.8	57.5	Bullish
BAJAJHLDNG	13064.0	13304.0	13184.0	12980.0	12860.0	12656.0	12953.0	13351.4	66.6	Bearish
BANKBARODA	234.5	236.8	235.6	234.6	233.4	232.3	235.2	239.0	67.0	Bearish
BANKINDIA	112.8	114.3	113.5	113.0	112.3	111.7	112.9	113.5	61.8	Bearish
MAHABANK	52.4	53.6	53.0	52.6	52.0	51.7	52.6	53.8	47.4	Bearish
BOSCHLTD	41495.0	41955.0	41725.0	41410.0	41180.0	40865.0	41120.0	39898.8	50.4	Bullish
BPCL	314.0	322.5	318.2	315.9	311.6	309.3	314.1	316.2	58.8	Bearish
BRITANNIA	6142.5	6208.8	6175.7	6131.8	6098.7	6054.8	6065.0	5705.2	68.8	Bullish
BSE	2353.2	2396.9	2375.0	2345.5	2323.6	2294.1	2290.5	2326.3	29.0	Bearish
CANBK	108.0	109.5	108.8	108.1	107.3	106.6	107.5	108.2	50.3	Bearish
CONCOR	541.6	552.7	547.1	543.4	537.8	534.1	544.1	542.3	55.7	Bearish
CGPOWER	740.1	761.2	750.6	740.5	729.9	719.8	739.3	694.9	36.3	Bullish
CHOLAFIN	1507.1	1538.2	1522.7	1509.1	1493.6	1480.0	1478.6	1479.8	54.5	Bearish
CIPLA	1551.6	1568.7	1560.2	1546.6	1538.1	1524.5	1560.5	1565.3	54.7	Bearish
COLPAL	2398.9	2427.7	2413.3	2394.6	2380.2	2361.5	2411.5	2311.9	55.6	Bullish
COALINDIA	388.0	390.7	389.3	388.0	386.7	385.4	389.8	382.9	64.0	Bullish
COCHINSHIP	1629.5	1679.0	1654.2	1639.7	1614.9	1600.4	1669.8	1677.8	37.3	Bearish
COFORGE	1696.6	1739.5	1718.1	1692.5	1671.1	1645.5	1688.3	1696.1	45.9	Bearish

NSE 200 SUPPORT & RESISTANCE

SYMBOL	CLOSE	R2	R1	PIVOT	S1	S2	5 DMA	20 DMA	% Delivery	Trend
DABUR	544.3	551.8	548.0	543.6	539.9	535.5	546.7	525.1	68.2	Bullish
DIVISLAB	6002.5	6069.2	6035.8	6016.7	5983.3	5964.2	6067.3	6093.4	75.1	Bearish
DIXON	18002.0	18236.7	18119.3	17962.7	17845.3	17688.7	17894.8	16993.9	34.2	Bullish
DLF	751.1	764.8	758.0	752.2	745.3	739.5	757.3	759.4	50.0	Bearish
DMART	4759.8	4829.6	4794.7	4743.1	4708.2	4656.6	4771.0	4631.8	41.5	Bullish
DRREDDY	1291.3	1320.3	1305.8	1281.3	1266.8	1242.3	1265.0	1259.3	45.2	Bullish
EICHERMOT	6874.5	7021.5	6948.0	6863.5	6790.0	6705.5	6613.3	6128.4	50.5	Bullish
ESCORTS	3767.2	3839.7	3803.5	3761.7	3725.5	3683.7	3708.2	3575.7	34.3	Bullish
ETERNAL	325.7	332.3	329.0	326.4	323.1	320.5	327.4	319.8	59.1	Bullish
EXIDEIND	426.8	433.6	430.2	426.6	423.2	419.7	418.3	398.7	47.1	Bullish
FEDERALBNK	191.6	193.3	192.5	191.2	190.3	189.1	191.2	194.5	63.1	Bearish
GAIL	173.0	174.7	173.8	172.8	171.9	170.8	174.4	174.7	60.3	Bearish
GODREJCP	1244.9	1264.9	1254.9	1240.0	1230.0	1215.1	1245.4	1237.2	65.0	Bullish
GMRAIRPORT	86.8	89.4	88.1	87.2	85.9	85.0	86.6	88.2	59.8	Bearish
GLENMARK	2116.3	2157.3	2136.8	2099.4	2078.9	2041.5	2043.1	1986.6	38.1	Bullish
GODREJPROP	1949.7	1983.8	1966.7	1957.0	1939.9	1930.2	1978.1	1991.3	43.9	Bearish
GRASIM	2795.9	2839.2	2817.6	2802.0	2780.4	2764.8	2799.0	2799.5	57.7	Bearish
HAVELLS	1587.1	1607.6	1597.3	1580.8	1570.5	1554.0	1579.9	1543.3	58.1	Bullish
HCLTECH	1427.1	1445.4	1436.2	1422.7	1413.5	1400.0	1431.7	1469.5	53.4	Bearish
HDFCAMC	5652.5	5767.5	5710.0	5670.5	5613.0	5573.5	5620.9	5630.9	61.8	Bearish
HDFCBANK	965.2	979.1	972.1	967.4	960.4	955.7	962.1	975.4	62.5	Bearish
HDFCLIFE	761.1	769.3	765.2	758.8	754.7	748.2	761.0	777.1	63.4	Bearish
HEROMOTOCO	5423.5	5531.2	5477.3	5434.2	5380.3	5337.2	5385.9	5091.0	48.2	Bullish
HAL	4454.0	4498.2	4476.1	4451.9	4429.8	4405.6	4438.1	4445.3	52.4	Bearish
HINDALCO	742.9	755.7	749.3	744.2	737.8	732.6	741.5	712.2	58.2	Bullish
HINDPETRO	389.9	399.8	394.8	392.1	387.1	384.4	387.9	391.1	42.2	Bearish
HUDCO	215.9	223.1	219.5	217.2	213.6	211.4	215.8	212.1	25.0	Bullish
HINDUNILVR	2642.0	2668.1	2655.0	2633.2	2620.1	2598.3	2646.1	2614.7	55.2	Bullish
HYUNDAI	2532.3	2656.0	2594.2	2553.1	2491.3	2450.2	2525.2	2427.9	45.0	Bullish
HINDZINC	433.5	443.5	438.5	435.0	430.0	426.5	438.3	430.7	54.5	Bullish
ICICIBANK	1403.7	1414.4	1409.1	1402.1	1396.8	1389.8	1402.3	1417.7	43.7	Bearish
ICICIGI	1834.9	1872.0	1853.5	1835.7	1817.2	1799.4	1840.4	1885.9	73.3	Bearish
IDEA	7.3	7.6	7.5	7.3	7.1	7.0	7.0	6.7	23.8	Bullish
IDFCFIRSTB	73.5	74.6	74.1	73.1	72.6	71.7	72.2	70.2	69.5	Bullish
IGL	209.3	215.8	212.5	210.7	207.4	205.5	214.4	209.0	45.8	Bullish
INDHOTEL	775.5	789.1	782.3	774.2	767.4	759.4	775.3	773.0	64.1	Bullish
INDUSINDBK	746.2	758.8	752.5	748.8	742.5	738.8	755.4	764.2	36.9	Bearish
INDIANB	670.0	679.3	674.7	671.8	667.2	664.3	667.9	667.3	76.2	Bullish
INDIGO	5637.5	5749.2	5693.3	5650.7	5594.8	5552.2	5687.8	5879.2	69.3	Bearish
INDUSTOWER	346.9	353.2	350.1	346.5	343.4	339.8	335.3	339.6	58.0	Bearish
INFY	1504.3	1529.4	1516.8	1494.7	1482.1	1460.0	1464.8	1471.8	37.9	Bearish
NAUKRI	1349.5	1392.2	1370.9	1355.8	1334.5	1319.4	1346.3	1363.5	47.1	Bearish
IOC	140.9	142.8	141.9	141.2	140.3	139.6	140.3	140.3	47.0	Bullish
ICICIPRULI	598.2	604.6	601.4	596.0	592.8	587.4	599.4	615.2	52.7	Bearish
IRB	42.3	44.4	43.3	42.7	41.7	41.1	42.5	43.8	40.3	Bearish
IRCTC	713.2	718.5	715.9	713.0	710.4	707.5	712.9	716.9	52.1	Bearish
IREDA	145.1	147.0	146.1	145.2	144.2	143.4	145.2	145.1	41.9	Bearish
IRFC	124.8	126.8	125.8	124.8	123.8	122.8	123.6	123.7	35.1	Bearish
ITC	410.1	413.0	411.5	409.5	408.0	405.9	410.5	408.1	67.1	Bullish
JIOFIN	308.0	314.3	311.1	309.2	306.0	304.1	310.3	319.0	47.8	Bearish

NSE 200 SUPPORT & RESISTANCE

SYMBOL	CLOSE	R2	R1	PIVOT	S1	S2	5 DMA	20 DMA	% Delivery	Trend
JINDALSTEL	1034.1	1055.2	1044.6	1033.9	1023.4	1012.7	1034.1	998.8	37.6	Bullish
JSWSTEEL	1104.5	1117.7	1111.1	1103.4	1096.8	1089.1	1084.7	1061.6	50.8	Bullish
JSWENERGY	506.1	515.2	510.6	507.8	503.3	500.5	506.4	516.8	51.4	Bearish
JUBLFOOD	663.8	670.9	667.4	662.4	658.9	653.9	653.7	638.6	68.0	Bullish
KALYANKJIL	500.3	512.4	506.3	501.4	495.3	490.4	504.8	511.8	56.3	Bearish
CUMMINSIND	4012.0	4074.3	4043.1	3997.7	3966.5	3921.1	3947.2	3855.3	64.0	Bullish
KOTAKBANK	1960.4	1981.5	1970.9	1955.4	1944.8	1929.3	1953.2	1974.3	58.1	Bearish
KPITTECH	1240.4	1266.6	1253.5	1241.4	1228.3	1216.2	1229.1	1211.8	40.2	Bullish
LICHSGFIN	557.6	564.3	560.9	559.0	555.6	553.6	556.6	564.3	60.4	Bearish
LICI	874.7	883.1	878.9	875.7	871.5	868.4	875.5	883.6	49.0	Bearish
LODHA	1172.4	1191.9	1182.1	1176.3	1166.5	1160.7	1184.5	1224.1	55.3	Bearish
LUPIN	1957.3	1982.0	1969.6	1952.2	1939.8	1922.4	1947.7	1943.5	57.5	Bullish
LT	3525.0	3564.1	3544.5	3530.5	3510.9	3496.9	3560.3	3602.7	47.6	Bearish
LTF	234.0	236.7	235.3	233.8	232.5	231.0	230.6	217.8	40.2	Bullish
LTIM	5185.5	5269.5	5227.5	5166.0	5124.0	5062.5	5174.2	5163.2	34.3	Bullish
MANKIND	2589.3	2630.8	2610.0	2581.3	2560.5	2531.8	2569.5	2520.1	60.8	Bullish
MFSL	1597.5	1623.8	1610.7	1587.6	1574.5	1551.4	1588.4	1611.5	73.8	Bearish
MAXHEALTH	1152.9	1169.6	1161.2	1150.8	1142.4	1132.0	1158.9	1201.0	71.2	Bearish
MAZADOCK	2684.0	2721.9	2703.0	2683.0	2664.1	2644.1	2683.2	2703.0	24.0	Bearish
M&M	3696.3	3748.4	3722.4	3697.7	3671.7	3647.0	3545.3	3369.1	48.6	Bullish
M&MFIN	269.0	274.5	271.7	269.9	267.1	265.3	266.3	261.8	56.2	Bullish
MOTILALOFS	884.8	908.3	896.5	888.3	876.5	868.3	881.0	909.0	50.8	Bearish
MOTHERSON	98.8	100.8	99.8	98.5	97.5	96.3	96.6	95.0	48.4	Bullish
MPHASIS	2853.3	2927.9	2890.6	2839.1	2801.8	2750.3	2838.4	2810.6	40.6	Bullish
MARICO	732.5	741.0	736.8	730.6	726.4	720.2	733.6	726.1	73.8	Bullish
MRF	149315.0	151665.0	150490.0	148595.0	147420.0	145525.0	148939.0	145563.0	32.3	Bullish
MARUTI	15365.0	15499.7	15432.3	15316.7	15249.3	15133.7	15021.4	14296.0	64.2	Bullish
MUTHOOTFIN	2942.4	2964.9	2953.6	2934.2	2922.9	2903.5	2858.2	2714.8	54.2	Bullish
NATIONALUM	206.6	213.7	210.2	208.2	204.6	202.7	208.6	194.3	36.0	Bullish
NESTLEIND	1202.2	1214.1	1208.2	1198.0	1192.1	1181.9	1201.2	1161.8	59.1	Bullish
NHPC	78.6	80.9	79.7	78.9	77.7	76.9	78.5	80.5	50.8	Bearish
NMDC	74.7	75.9	75.3	74.5	73.8	73.0	74.3	71.5	50.4	Bullish
NTPC	324.1	329.8	327.0	325.3	322.5	320.8	328.8	334.2	65.9	Bearish
NTPCGREEN	103.2	104.2	103.7	103.2	102.7	102.3	103.7	103.1	46.5	Bullish
NYKAA	241.5	252.9	247.2	242.7	236.9	232.4	241.7	228.0	49.9	Bullish
OBEROIRLTY	1617.4	1648.6	1633.0	1618.9	1603.3	1589.2	1637.6	1637.9	66.7	Bearish
OFSS	8413.0	8488.3	8450.7	8390.3	8352.7	8292.3	8339.9	8496.4	33.9	Bearish
OIL	392.6	400.1	396.3	393.9	390.1	387.7	395.5	403.1	36.5	Bearish
OLAELEC	59.8	64.5	62.2	59.7	57.3	54.8	62.7	52.1	100.0	Bullish
ONGC	231.3	236.1	233.7	232.2	229.9	228.4	234.6	236.1	67.5	Bearish
PAGEIND	44310.0	44813.3	44561.7	44248.3	43996.7	43683.3	44573.0	44854.5	52.4	Bearish
PATANJALI	1802.1	1817.9	1810.0	1800.0	1792.1	1782.1	1803.2	1796.2	53.4	Bullish
PAYTM	1219.1	1273.9	1246.5	1229.6	1202.2	1185.3	1251.2	1221.2	44.5	Bearish
PRESTIGE	1542.7	1562.1	1552.4	1541.2	1531.5	1520.3	1546.2	1597.1	49.1	Bearish
PHOENIXLTD	1555.5	1601.5	1578.5	1539.8	1516.8	1478.1	1523.4	1515.7	60.1	Bullish
PIIND	3695.5	3752.8	3724.1	3686.6	3657.9	3620.4	3711.2	3768.3	56.9	Bearish
PIDILITIND	3100.1	3151.6	3125.9	3109.1	3083.4	3066.6	3106.0	3092.6	61.9	Bullish
PETRONET	273.1	277.3	275.2	273.9	271.8	270.4	274.4	275.1	64.0	Bearish
PNB	104.3	105.3	104.8	104.3	103.8	103.3	104.0	104.8	43.1	Bearish
POLICYBZR	1807.4	1860.4	1833.9	1808.1	1781.6	1755.8	1822.2	1848.1	49.7	Bearish

NSE 200 SUPPORT & RESISTANCE

SYMBOL	CLOSE	R2	R1	PIVOT	S1	S2	5 DMA	20 DMA	% Delivery	Trend
POLYCAB	7193.0	7443.3	7318.2	7246.3	7121.2	7049.3	7247.5	7096.9	48.3	Bullish
PFC	392.9	399.5	396.2	394.4	391.1	389.2	393.4	399.5	63.3	Bearish
PREMIERENE	998.6	1010.2	1004.4	997.7	991.9	985.2	1006.3	1010.0	45.0	Bearish
PERSISTENT	5131.0	5208.7	5169.8	5097.2	5058.3	4985.7	5186.9	5283.7	50.2	Bearish
POWERGRID	283.9	286.0	284.9	283.3	282.3	280.7	284.0	284.0	62.7	Bearish
RECLTD	368.1	373.0	370.6	368.4	365.9	363.7	367.1	372.2	51.3	Bearish
RELIANCE	1376.2	1387.9	1382.0	1375.4	1369.5	1362.9	1372.3	1384.7	52.6	Bearish
RVNL	332.4	338.9	335.7	332.6	329.3	326.2	331.1	325.3	27.3	Bullish
SAIL	129.5	132.5	131.0	130.1	128.5	127.6	129.5	123.8	34.0	Bullish
SBICARD	819.4	832.6	826.0	814.4	807.7	796.1	800.6	805.8	60.3	Bearish
SBILIFE	1805.7	1831.7	1818.7	1798.5	1785.5	1765.3	1798.7	1829.3	65.4	Bearish
SBIN	808.9	815.7	812.3	808.9	805.5	802.2	809.2	815.3	36.0	Bearish
SHRIRAMFIN	595.0	603.0	599.0	594.9	590.9	586.8	591.3	603.4	63.9	Bearish
SUPREMEIND	4378.5	4564.7	4471.6	4381.8	4288.7	4198.9	4527.8	4500.5	67.9	Bearish
SIEMENS	3190.1	3266.6	3228.3	3161.8	3123.5	3057.0	3153.4	3138.1	51.1	Bullish
SJVN	92.5	94.1	93.3	92.7	91.8	91.2	92.9	95.0	51.5	Bearish
SOLARINDS	13882.0	14109.3	13995.7	13915.3	13801.7	13721.3	14016.8	14390.5	46.0	Bearish
SONACOMS	445.5	460.8	453.1	448.4	440.7	436.0	445.8	447.6	52.0	Bearish
SHREECEM	30190.0	30866.7	30528.3	30321.7	29983.3	29776.7	30120.0	30247.3	71.5	Bearish
SRF	2934.0	2980.0	2957.0	2916.0	2893.0	2852.0	2902.4	2889.9	56.2	Bullish
SUZLON	57.1	58.0	57.5	57.3	56.8	56.5	57.6	58.6	51.5	Bearish
SUNPHARMA	1591.7	1608.2	1600.0	1588.7	1580.5	1569.2	1585.5	1609.0	53.5	Bearish
SWIGGY	436.7	450.8	443.7	438.0	430.9	425.2	434.5	420.0	47.8	Bullish
TATASTEEL	169.2	170.7	169.9	169.0	168.2	167.2	168.1	160.5	46.0	Bullish
TATACONSUM	1083.5	1097.1	1090.3	1079.2	1072.4	1061.3	1081.1	1076.0	60.2	Bullish
TATATECH	679.6	693.2	686.4	682.3	675.5	671.5	678.1	674.8	37.8	Bullish
TATACOMM	1603.5	1655.6	1629.5	1588.4	1562.3	1521.2	1564.1	1600.3	58.3	Bearish
TCS	3049.4	3075.9	3062.7	3046.7	3033.5	3017.5	3062.0	3071.4	42.3	Bearish
TECHM	1498.2	1522.3	1510.2	1488.0	1475.9	1453.7	1489.1	1498.6	45.0	Bearish
TATAELXSI	5553.5	5776.2	5664.8	5570.2	5458.8	5364.2	5465.9	5537.2	18.4	Bearish
TIINDIA	3151.5	3223.0	3187.2	3133.3	3097.5	3043.6	3051.0	3056.7	49.4	Bearish
TORNTPOWER	1243.9	1276.2	1260.1	1249.8	1233.7	1223.4	1275.1	1291.2	65.9	Bearish
TATAPOWER	384.7	388.3	386.5	383.8	382.0	379.3	385.1	384.0	50.5	Bullish
TRENT	5218.5	5398.2	5308.3	5257.2	5167.3	5116.2	5414.1	5405.0	50.3	Bearish
TORNTPHARM	3643.3	3692.2	3667.7	3628.5	3604.0	3564.8	3608.3	3620.3	72.8	Bearish
TITAN	3630.1	3687.6	3658.9	3639.0	3610.3	3590.4	3667.0	3597.6	60.8	Bullish
TATAMOTORS	715.6	725.9	720.7	717.1	712.0	708.4	701.3	683.1	37.4	Bullish
TVSMOTOR	3566.3	3622.2	3594.3	3569.3	3541.4	3516.4	3493.5	3277.2	61.0	Bullish
UNIONBANK	127.2	129.3	128.3	127.4	126.4	125.6	127.6	131.5	66.6	Bearish
UNITDSPR	1304.4	1316.6	1310.5	1301.1	1295.0	1285.6	1316.2	1315.4	51.6	Bearish
UPL	704.0	723.9	714.0	706.0	696.0	688.0	701.9	706.0	45.9	Bearish
ULTRACEMCO	12572.0	12779.3	12675.7	12604.3	12500.7	12429.3	12644.2	12634.4	76.7	Bearish
VBL	474.5	482.1	478.3	474.9	471.1	467.7	482.6	500.6	63.2	Bearish
VEDL	432.8	440.2	436.5	434.2	430.5	428.3	437.6	436.6	63.9	Bearish
VMM	153.2	155.6	154.4	152.6	151.4	149.7	151.0	148.5	49.6	Bullish
VOLTAS	1412.3	1437.9	1425.1	1415.2	1402.4	1392.5	1419.4	1362.1	63.7	Bullish
WAAREEENER	3259.1	3338.9	3299.0	3225.1	3185.2	3111.3	3216.2	3166.2	29.0	Bullish
WIPRO	249.2	252.9	251.0	248.0	246.2	243.2	246.0	247.5	33.5	Bearish
YESBANK	20.3	20.6	20.5	20.3	20.2	20.1	20.3	19.4	46.8	Bullish
ZYDUSLIFE	1035.6	1057.3	1046.5	1027.8	1017.0	998.3	1015.9	993.0	58.6	Bullish

Disclosure & Disclaimer :

HDFC Securities Limited (HSL) is a SEBI Registered Research Analyst having registration no. INH000002475.

This report has been prepared by HDFC Securities Ltd and is solely for information of the recipient only. The report must not be used as a singular basis of any investment decision. The views herein are of a general nature and do not consider the risk appetite or the particular circumstances of an individual investor; readers are requested to take professional advice before investing. "This report may have been refined using AI tools to enhance clarity and readability."

Nothing in this document should be construed as investment advice. Each recipient of this document should make such investigations as they deem necessary to arrive at an independent evaluation of an investment in securities of the companies referred to in this document (including merits and risks) and should consult their own advisors to determine merits and risks of such investment. The information and opinions contained herein have been compiled or arrived at, based upon information obtained in good faith from sources believed to be reliable. Such information has not been independently verified and no guaranty, representation of warranty, express or implied, is made as to its accuracy, completeness or correctness. All such information and opinions are subject to change without notice. Descriptions of any company or companies or their securities mentioned herein are not intended to be complete. HSL is not obliged to update this report for such changes. HSL has the right to make changes and modifications at any time.

This report is not directed to, or intended for display, downloading, printing, reproducing or for distribution to or use by, any person or entity who is a citizen or resident or located in any locality, state, country or other jurisdiction where such distribution, publication, reproduction, availability or use would be contrary to law or regulation or what would subject HSL or its affiliates to any registration or licensing requirement within such jurisdiction.

If this report is inadvertently sent or has reached any person in such country, especially, United States of America, the same should be ignored and brought to the attention of the sender. This document may not be reproduced, distributed or published in whole or in part, directly or indirectly, for any purposes or in any manner.

Foreign currencies denominated securities, wherever mentioned, are subject to exchange rate fluctuations, which could have an adverse effect on their value or price, or the income derived from them. In addition, investors in securities such as ADRs, the values of which are influenced by foreign currencies effectively assume currency risk. It should not be considered to be taken as an offer to

sell or a solicitation to buy any security.

This document is not, and should not, be construed as an offer or solicitation of an offer, to buy or sell any securities or other financial instruments. This report should not be construed as an invitation or solicitation to do business with HSL. HSL may from time to time solicit from, or perform broking, or other services for, any company mentioned in this mail and/or its attachments.

HSL and its affiliated company(ies), their directors and employees may; (a) from time to time, have a long or short position in, and buy or sell the securities of the company(ies) mentioned herein or (b) be engaged in any other transaction involving such securities and earn brokerage or other compensation or act as a market maker in the financial instruments of the company(ies) discussed herein or act as an advisor or lender/borrower to such company(ies) or may have any other potential conflict of interests with respect to any recommendation and other related information and opinions.

HSL, its directors, analysts or employees do not take any responsibility, financial or otherwise, of the losses or the damages sustained due to the investments made or any action taken on basis of this report, including but not restricted to, fluctuation in the prices of shares and bonds, changes in the currency rates, diminution in the NAVs, reduction in the dividend or income, etc.

HSL and other group companies, its directors, associates, employees may have various positions in any of the stocks, securities and financial instruments dealt in the report, or may make sell or purchase or other deals in these securities from time to time or may deal in other securities of the companies / organizations described in this report. As regards the associates of HSL please refer the website.

HSL or its associates might have managed or co-managed public offering of securities for the subject company or might have been mandated by the subject company for any other assignment in the past twelve months.

Please note that HDFC Securities has a proprietary trading desk. This desk maintains an arm's length distance with the Research team and all its activities are segregated from Research activities. The proprietary desk operates independently, potentially leading to investment decisions that may deviate from research views.

HSL or its associates might have received any compensation from the companies mentioned in the report during the period preceding twelve months from the date of this report for services in respect of managing or co-managing public offerings, corporate finance, investment banking or merchant banking, brokerage services or other advisory service in a merger or specific transaction in the normal course of business.

HSL or its analysts did not receive any compensation or other benefits from the companies mentioned in the report or third party in connection with preparation of the research report. Accordingly, neither HSL nor Research Analysts have any material conflict of interest at the time of publication of this report. Compensation of our Research Analysts is not based on any specific merchant banking, investment banking or brokerage service transactions. HSL may have issued other reports that are inconsistent with and reach different conclusion from the information presented in this report.

Research entity has not been engaged in market making activity for the subject company. Research analyst has not served as an officer, director or employee of the subject company. We have not received any compensation/benefits from the subject company or third party in connection with the Research Report.

HDFC securities Limited, I Think Techno Campus, Building - B, "Alpha", Office Floor 8, Near Kanjurmarg Station, Opp. Crompton Greaves, Kanjurmarg (East), Mumbai 400 042 Phone: (022) 3075 3400 Fax: (022) 2496 5066

Compliance Officer: Murli V Karkera Email: complianceofficer@hdfcsec.com Phone: (022) 3045 3600

For grievance redressal contact Customer Care Team Email: customercare@hdfcsec.com Phone: (022) 3901 9400

HDFC Securities Limited, SEBI Reg. No.: NSE, BSE, MSEI, MCX: INZ000186937; AMFI Reg. No. ARN: 13549; PFRDA Reg. No. POP: 11092018; IRDA Corporate Agent License No.: CA0062; SEBI Research Analyst Reg. No.: INH000002475; SEBI Investment Adviser Reg. No.: INA000011538; CIN - U67120MH2000PLC152193

Investment in securities market are subject to market risks. Read all the related documents carefully before investing.

Mutual Funds Investments are subject to market risk. Please read the offer and scheme related documents carefully before investing.

Registration granted by SEBI, membership of BASL (in case of IAs) and certification from NISM in no way guarantee performance of the intermediary or provide any assurance of returns to investors.